



High Technology Enterprises
高新技术企业认定证书



Certificate For Foreign-Funded
Enterprises With Advanced Technology
外商投资先进技术企业确认证书

目录 Contents

Technical Data 主要性能参数	2-3
Order Number Explanation 产品订货代码	4-5
Shell Size-Arrangement No. 绝缘体规格—芯数代码	6-13
Angular Displacement of Insert 绝缘体防误插方位图表	14
Receptacle Shell 插座外壳	15-16
Plug Shell 插头外壳	17
Receptacle Mounting Methods 插座安装方式	18
Assembly Nut Plate 组合螺母紧固片	19
Rubber Sealing Gasket 橡胶密封垫片	20
Extension Products 延伸产品	21-23
Cable Clamp Part Number Explanation 订购电缆夹规格标示	24-27
Protection Cap 防护盖	28
Assembly Instruction 组装步骤	29

Technical Data

主要性能参数

► Table 1 表1 Material & Finish of Main Parts 主要部件的材料和表面处理

Part Type 部件类别	Material 材料	Finish 表面处理	Salty Spray Corrosion 耐盐雾腐蚀
Shell 外壳	Aluminum Alloy 铝合金	Zinc Passivation 镀锌钝化 (军绿色)	≥ 96 Hours ≥ 96小时
		Electronphoretic Paint 电泳漆 (黑色)	≥ 400 Hours ≥ 400小时
Contacts 接触件	Copper Alloy 铜合金	Silver Plating (Gold Plating of Customization) 镀银 (镀金需定制)	
Insert 绝缘体	Halogen free & fire resistance thermoplastic material UL94-V0 无卤阻燃热塑塑料UL94-V0	—	—
Bushing 电缆护套	Low Fire Hazard Rubber 低火险橡胶	—	—
Operating Temperature 产品工作温度	-55°C~+125°C		
Mechanical Life 机械寿命	≥ 500 Cycles ≥ 500次		

► Table 2 表2 Service Rating 使用等级

Service Rating 使用等级	Rated Voltage 额定电压		Withstand Voltage 耐压	Mechanical Spacing 电气间隙	Creepage Distance 爬电距离
Inst.	250DC.V	200AC.V	1000AC.V	-	1.57mm
A	700DC.V	500AC.V	2000AC.V	1.59mm	3.18mm
D	1250DC.V	900AC.V	2800AC.V	3.18mm	4.76mm
E	1750DC.V	1250AC.V	3500AC.V	4.76mm	6.35mm

► Table 3 表3 Contact Ratings 接触件额定值

Contact Size 接触件代码	Rated Current 额定电流 Max Amps	Operating Current 工作电流 Amps	Test Current 测试电流 Amps	Voltage Drop 电压压降 mV
#16	22	13	20	21
#12	41	23	35	20
#8	73	46	60	12
#4	135	80	110	10

► Table 4 表4 Solder Well 焊接槽

Contact Size 接触件代码	Well Dia 槽直径 mm	Dimensions 英制尺寸 inch	Well Depth 槽深 mm	Dimensions 英制尺寸 inch	Max Allowable Cable 最大可用电缆 (AWG)
#16	1.80	0.0709	6.60	0.2598	16
#12	2.90	0.1142	10.0	0.3937	12
#8	5.35	0.2106	13.0	0.5118	8
#4	8.40	0.3307	16.0	0.6299	4

Current-carrying capacity tends to decline with the ambient temperature going higher and its contacts increasing. See table(A) Contact Current De-rating

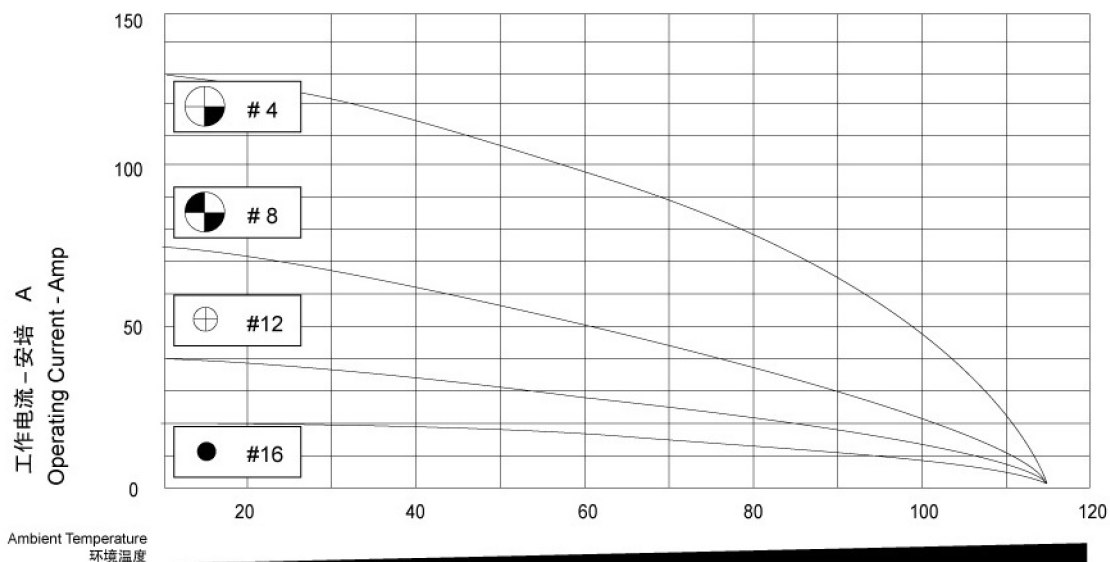
随着环境温度的升高，连接器接触件芯数的增加等原因，接触件的载流量应作相应的降低。

见表(A) 接触件电流下降图表

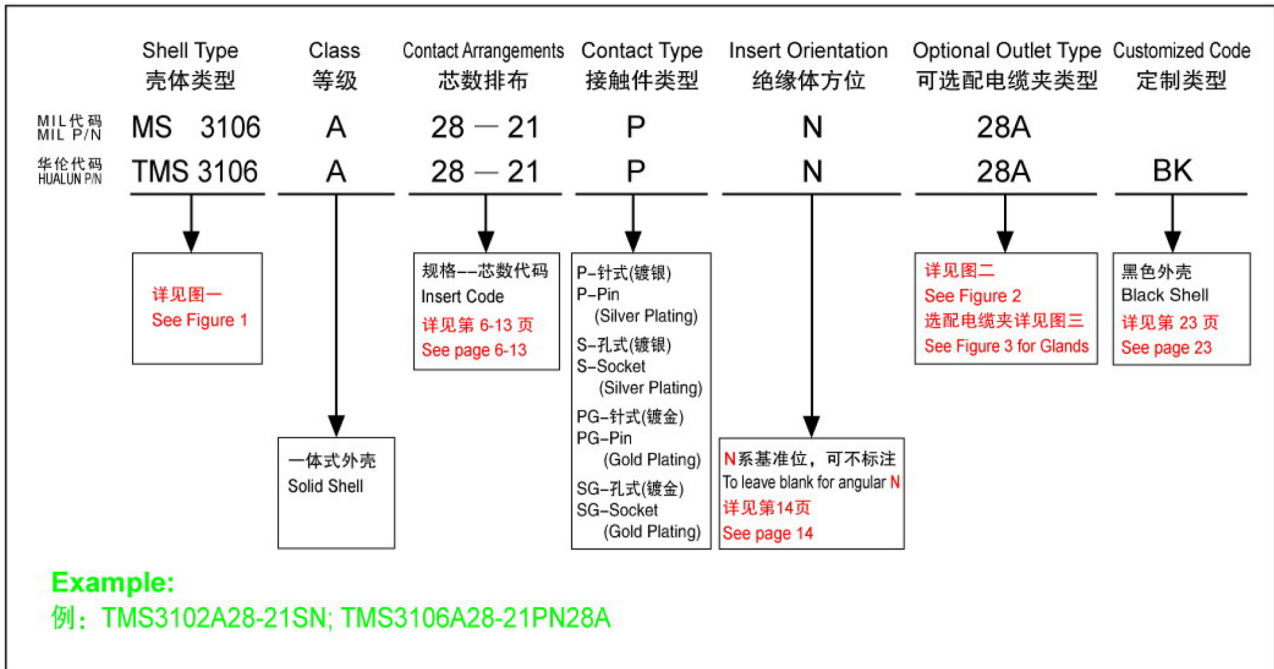
★ Table (A) 表(A)

Contact Current De-rating

接触件电流下降图表



Order Number Explanation 产品订货代码

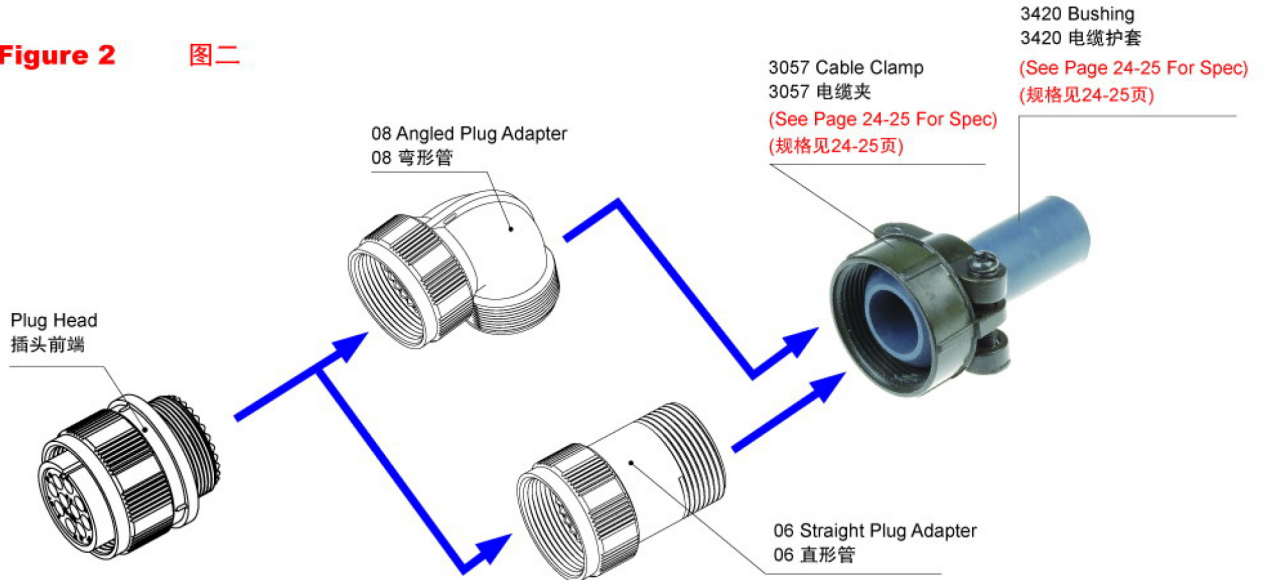


Matching Guide 外壳配对图



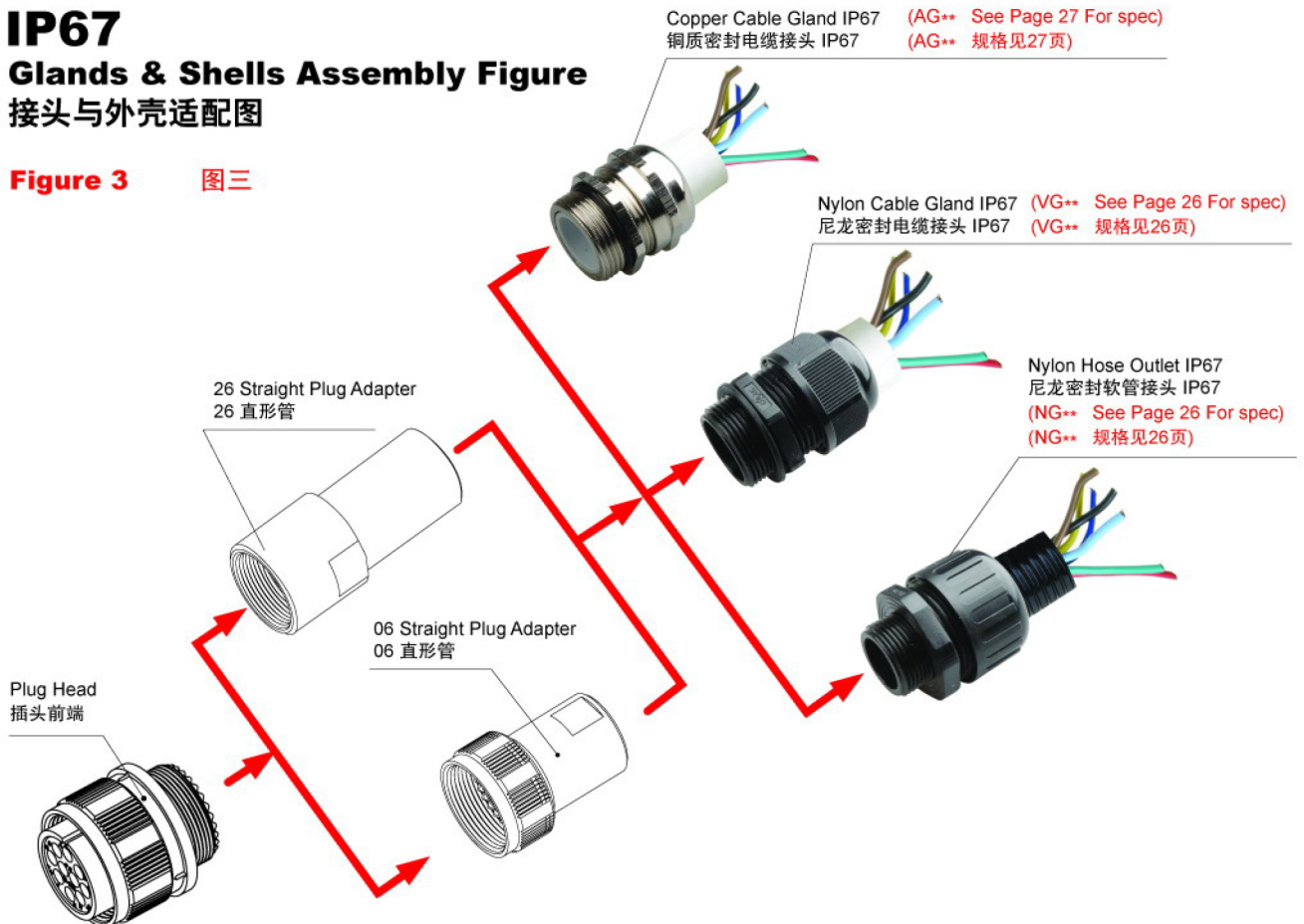
Cable Clamps & Shells Assembly Figure
电缆夹与外壳适配图

Figure 2 图二



IP67
Glands & Shells Assembly Figure
接头与外壳适配图

Figure 3 图三



Shell Size - Arrangement No. 绝缘体规格 - 芯数代码

View from mating face of pin insert
耦合面为插针(P)的视图

#16 ● #12 ⊕ #8 ⊗ #4 ⊙

Size 规格	14S				
Contact Arrangement 图示					
Shell Size-Arrangement No. 绝缘体规格-芯数代码	14S-2	14S-5	14S-6	14S-7	14S-9
Contact Size×Contact Qty. 接触对规格×数量	#16×4	#16×5	#16×6	#16×3	#16×2
Service Rating 使用等级	Inst.	Inst.	Inst.	A	A

Size 规格	16S、16				
Contact Arrangement 图示					
Shell Size-Arrangement No. 绝缘体规格-芯数代码	16S-1	16S-4	16S-5	16-9	16-10
Contact Size×Contact Qty. 接触对规格×数量	#16×7	#16×2	#16×3	#16×2 #12×2	#12×3
Service Rating 使用等级	A	D	A	A	A

Size 规格	18			
Contact Arrangement 图示				
Shell Size-Arrangement No. 绝缘体规格-芯数代码	18-1	18-3	18-10	18-11
Contact Size×Contact Qty. 接触对规格×数量	#16×10	#12×2	#12×4	#12×5
Service Rating 使用等级	A (B.C.F.G) Inst. (All others)	D	A	A

View from mating face of pin insert
耦合面为插针(P)的视图

#16 ● #12 ⊕ #8 ⊙ #4 ⊕

Size 规格	18			
Contact Arrangement 图示				
Shell Size-Arrangement No. 绝缘体规格-芯数代码	18-12	18-19	18-20	18-22
Contact Size×Contact Qty. 接触对规格×数量	#16×6	#16×10	#16×5	#16×3
Service Rating 使用等级	A	A	A	D

Size 规格	20			
Contact Arrangement 图示				
Shell Size-Arrangement No. 绝缘体规格-芯数代码	20-3	20-4	20-7	20-15
Contact Size×Contact Qty. 接触对规格×数量	#12×3	#12×4	#16×8	#12×7
Service Rating 使用等级	D	D	A (C.D.E.F) D (A.B.G.H)	A

Size 规格	20			
Contact Arrangement 图示				
Shell Size-Arrangement No. 绝缘体规格-芯数代码	20-16	20-18	20-27	20-29
Contact Size×Contact Qty. 接触对规格×数量	#16×7 #12×2	#16×6 #12×3	#16×14	#16×17
Service Rating 使用等级	A	A	A	A

View from mating face of pin insert
耦合面为插针(P)的视图

#16 ● #12 ⊕ #8 ⊗ #4 ⊙

Size 规格	20				22			
Contact Arrangement 图示								
Shell Size-Arrangement No. 绝缘体规格-芯数代码	20-33	22-2	22-5	22-8	22-10	22-14	22-18	22-19
Contact Size×Contact Qty. 接触对规格×数量	#16×11	#8×3	#16×4 #12×2	#12×2	#16×4	#16×19	#16×8	#16×14
Service Rating 使用等级	A	D	D	E	E	A	A (C,D,E) D (All others)	A

Size 规格	22			
Contact Arrangement 图示				
Shell Size-Arrangement No. 绝缘体规格-芯数代码	22-10	22-14	22-18	22-19
Contact Size×Contact Qty. 接触对规格×数量	#16×4	#16×19	#16×8	#16×14
Service Rating 使用等级	E	A	A (C,D,E) D (All others)	A

Size 规格	22			
Contact Arrangement 图示				
Shell Size-Arrangement No. 绝缘体规格-芯数代码	22-20	22-22	22-23	22-28
Contact Size×Contact Qty. 接触对规格×数量	#16×9	#8×4	#12×8	#12×7
Service Rating 使用等级	A	A	D (H) A (All others)	A

View from mating face of pin insert
耦合面为插针(P)的视图

#16 ● #12 ⊕ #8 ⊗ #4 ⊕

Size 规格	24			
Contact Arrangement 图示				
Shell Size-Arrangement No. 绝缘体规格-芯数代码	24-2	24-5	24-7	24-10
Contact Size×Contact Qty. 接触对规格×数量	#12×7	#16×16	#16×14 #12×2	#8×7
Service Rating 使用等级	D	A	A	A

Size 规格	24			
Contact Arrangement 图示				
Shell Size-Arrangement No. 绝缘体规格-芯数代码	24-11	24-20	24-22	24-28
Contact Size×Contact Qty. 接触对规格×数量	#12×6 #8×3	#16×9 #12×2	#8×4	#16×24
Service Rating 使用等级	A	D	D	Inst.

View from mating face of pin insert
耦合面为插针(P)的视图

#16 ● #12 ⊕ #8 ⊕ #4 ⊕

Size 规格	28		
Contact Arrangement 图示			
Shell Size-Arrangement No. 绝缘体规格-芯数代码	28-10	28-11	28-12
Contact Size×Contact Qty. 接触对规格×数量	#12×3 #8×2 #4×2	#16×18 #12×4	#16×26
Service Rating 使用等级	D (G) A (All others)	A	A

Size 规格	28		
Contact Arrangement 图示			
Shell Size-Arrangement No. 绝缘体规格-芯数代码	28-15	28-16	28-20
Contact Size×Contact Qty. 接触对规格×数量	#16×35	#16×20	#16×4 #12×10
Service Rating 使用等级	A	A	A

View from mating face of pin insert
耦合面为插针(P)的视图

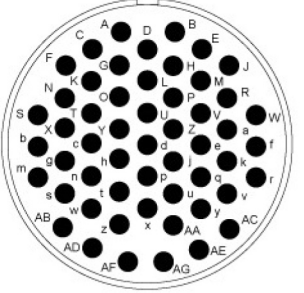
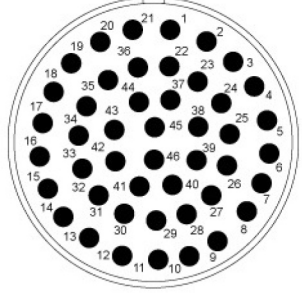
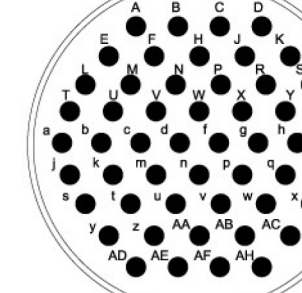
#16 ● #12 ⊕ #8 ⊙ #4 ⊕

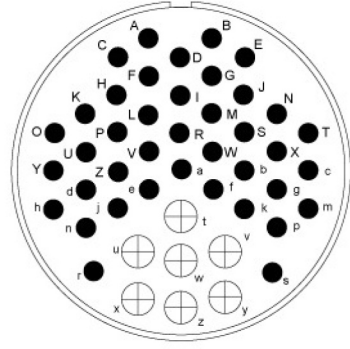
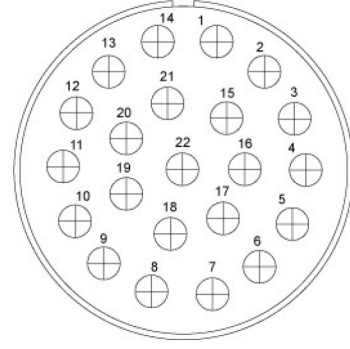
Size 规格	28		
Contact Arrangement 图示			
Shell Size-Arrangement No. 绝缘体规格-芯数代码	28-21	28-22	28-A9
Contact Size×Contact Qty. 接触对规格×数量	#16×37	#16×3 #4×3	#16×5 #4×4
Service Rating 使用等级	A	D	A

Size 规格	32		
Contact Arrangement 图示			
Shell Size-Arrangement No. 绝缘体规格-芯数代码	32-7	32-13	32-17
Contact Size×Contact Qty. 接触对规格×数量	#16×28 #12×7	#16×18 #12×5	#4×4
Service Rating 使用等级	Inst (A.B.h.j) A (All others)	D	D

View from mating face of pin insert
耦合面为插针(P)的视图

#16 ● #12 ⊕ #8 ⊕ #4 ⊕

Size 规格	32		36
Contact Arrangement 图示			
Shell Size-Arrangement No. 绝缘体规格-芯数代码	32-22	32-73	36-52
Contact Size×Contact Qty. 接触对规格×数量	#16×54	#16×46	#16×52
Service Rating 使用等级	A	A	A

Size 规格	36	
Contact Arrangement 图示		
Shell Size-Arrangement No. 绝缘体规格-芯数代码	36-7	36-A22
Contact Size×Contact Qty. 接触对规格×数量	#16×40 #12×7	#12×22
Service Rating 使用等级	A	D

View from mating face of pin insert
耦合面为插针(P)的视图

#16 ● #12 ⊕ #8 ⊗ #4 ⊕

Size 规格	40	
Contact Arrangement 图示		
Shell Size-Arrangement No. 绝缘体规格-芯数代码	40-1	40-A60
Contact Size×Contact Qty. 接触对规格×数量	#16×24 #12×6	#16×60
Service Rating 使用等级	D	A

Angular Displacement Of Insert

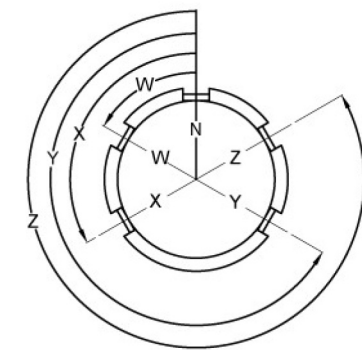
绝缘体防误插方位图表

When more than two connectors with same spec and contacts are applied to a device together, to alternate the inserts to different angles can prevent mismatching.

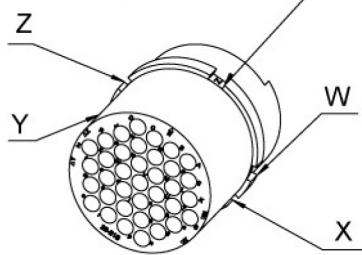
在一个设备上，需要同时使用二个以上同规格芯数的连接器时，旋转绝缘体至互不相同方位安装，能有效防止误插。

Front face of pin insert

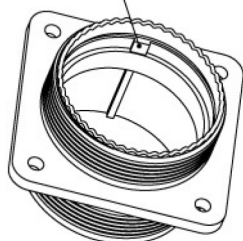
下方视图为针绝缘体端面
(与孔绝缘体的耦合面)



Angular Position(N)
角位N(基准角位)



Key
键位

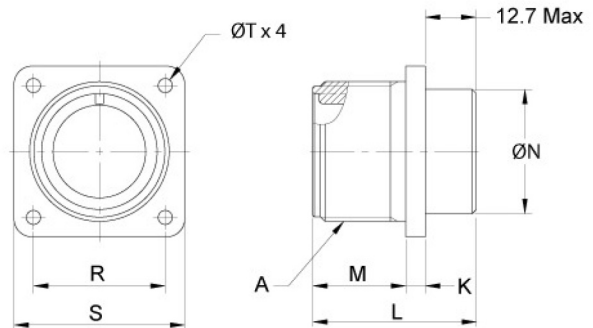


Insert Code 绝缘体规格 芯数代码	Angular Displacement Of Insert 防误插方位				
	N	W	X	Y	Z
14S-2	0	—	120	240	—
14S-5	0	—	110	—	—
14S-6	0	—	—	—	—
14S-7	0	90	180	270	—
14S-9	0	70	145	215	290
16S-1	0	80	—	—	280
16S-4	0	35	110	250	325
16S-5	0	70	145	215	290
16-9	0	35	110	250	325
16-10	0	90	180	270	—
18-1	0	70	145	215	290
18-3	0	35	110	250	325
18-10	0	—	120	120	—
18-11	0	—	170	265	—
18-12	0	80	—	—	280
18-19	0	—	120	240	—
18-20	0	90	180	270	—
18-22	0	70	145	215	290
20-3	0	70	145	215	290
20-4	0	45	110	250	—
20-7	0	80	110	250	280
20-15	0	80	—	—	280
20-16	0	80	110	250	280
20-18	0	35	110	250	325
20-27	0	35	110	250	325
20-29	0	80	—	—	280
20-33	0	—	—	—	—
22-2	0	70	145	215	290
22-5	0	35	110	250	325
22-8	0	35	110	250	325
22-10	0	35	110	250	325
22-14	0	80	110	250	280
22-18	0	80	110	250	280
22-19	0	80	110	250	280
22-20	0	35	110	250	325
22-22	0	—	110	250	—
22-23	0	35	—	250	—
22-28	0	80	—	—	280
24-2	0	80	—	—	280
24-5	0	80	110	250	280
24-7	0	80	110	250	280
24-10	0	80	—	—	280
24-11	0	35	110	250	325
24-20	0	80	110	250	280
24-22	0	45	110	250	—
24-28	0	80	110	250	280
28-10	0	80	110	250	280
28-11	0	80	110	250	280
28-12	0	90	180	270	—
28-15	0	80	110	250	280
28-16	0	80	110	250	280
28-20	0	80	110	250	280
28-21	0	80	110	250	280
28-22	0	70	145	215	290
28-A9	0	110	250	260	280
32-7	0	80	125	235	280
32-13	0	80	110	250	280
32-17	0	45	110	250	—
32-22	0	80	110	250	280
32-73	0	36	—	—	—
36-7	0	80	110	250	280
36-A22	0	80	110	250	280
36-52	0	72	144	216	288
40-1	0	65	130	235	300
40-A60	0	80	110	250	280

Note: 32-22 has two angles of U (100) and V (260), besides N, W, X, Y and Z.
注：32-22除N、W、X、Y和Z角位外，还有U (100)和V (260)两个角位。

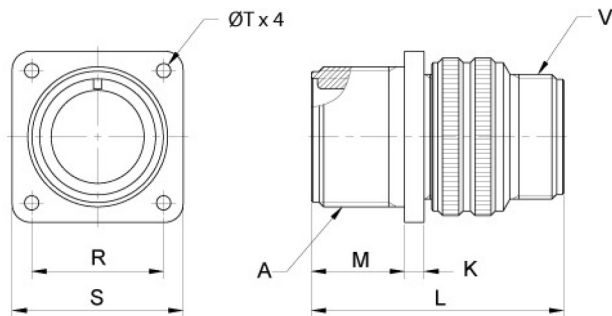
Receptacle Shell 插座外壳

TMS3102A



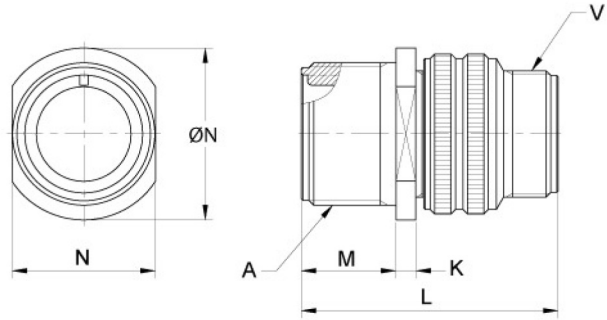
TMS3102A	A	S	R	M	K	L Max	ØN	ØT x 4
-14S	7/8-20UNEF	30.2	23.01	14.27	2~2.1	30.25	19.1	3.2
-16S	1-20UNEF	32.5	24.61	14.27	2~2.1	30.25	22.2	3.2
-16	1-20UNEF	32.5	24.61	19.05	3~3.2	44.45	22.2	3.2
-18	1 1/8-18UNEF	34.9	26.97	19.05	3~3.2	49.22	25.4	3.2
-20	1 1/4-18UNEF	38.1	29.36	19.05	3~3.2	49.22	28.6	3.2
-22	1 3/8-18UNEF	41.3	31.75	19.05	3~3.2	49.22	31.8	3.2
-24	1 1/2-18UNEF	44.5	34.92	20.62	3~3.2	49.22	34.9	3.7
-28	1 3/4-18UNS	50.8	39.67	20.62	3~3.2	49.22	41.3	3.7
-32	2-18UNS	57.2	44.45	22.23	3.5~3.7	49.22	47.6	4.3
-36	2 1/4-16UN	63.5	49.23	22.23	3.5~3.7	49.22	52.4	4.3
-40	2 1/2-16UN	68.9	55.58	22.23	3.5~3.7	49.22	58.7	4.3

TMS3100A



TMS3100A	A	S	R	M	K	L	ØT x 4	V
-14S	7/8-20UNEF	30.20	23.01	14.27	2~2.1	44	3.2	3/4-20UNEF
-16S	1-20UNEF	32.50	24.61	14.27	2~2.1	44	3.2	7/8-20UNEF
-16	1-20UNEF	32.50	24.61	19.05	3~3.2	48.5	3.2	7/8-20UNEF
-18	1 1/8-18UNEF	34.90	26.97	19.05	3~3.2	67	3.2	1-20UNEF
-20	1 1/4-18UNEF	38.10	29.36	19.05	3~3.2	69	3.2	1 3/16-18UNEF
-22	1 3/8-18UNEF	41.30	31.75	19.05	3~3.2	72	3.2	1 3/16-18UNEF
-24	1 1/2-18UNEF	44.50	34.92	20.62	3~3.2	72	3.7	1 7/16-18UNEF
-28	1 3/4-18UNS	50.80	39.67	20.62	3~3.2	72	3.7	1 7/16-18UNEF
-32	2-18UNS	57.20	44.45	22.23	3.5~3.7	72	4.3	1 3/4-18UNS
-36	2 1/4-16UN	63.50	49.23	22.23	3.5~3.7	75	4.3	2-18UNS
-40	2 1/2-16UN	68.90	55.58	22.23	3.5~3.7	75	4.3	2 1/4-16UN

TMS3101A

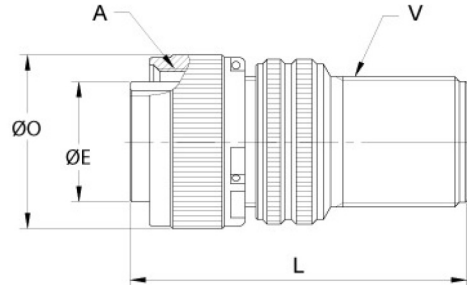


TMS3101A	A	ØN	N	L	V
-14S	7/8-20UNEF	29.4	26.4	44	3/4-20UNEF
-16S	1-20UNEF	31.8	28.8	44	7/8-20UNEF
-16	1-20UNEF	31.8	28.8	48.5	7/8-20UNEF
-18	1 1/8-18UNEF	34.1	31.5	67	1-20UNEF
-20	1 1/4-18UNEF	37.3	34.6	69	1 3/16-18UNEF
-22	1 3/8-18UNEF	40.5	38	72	1 3/16-18UNEF
-24	1 1/2-18UNEF	43.7	41.5	72	1 7/16-18UNEF
-28	1 3/4-18UNS	50	47	72	1 7/16-18UNEF
-32	2-18UNS	56.4	53.7	72	1 3/4-18UNS
-36	2 1/4-16UN	62.7	60.2	75	2-18UNS
-40	2 1/2-16UN	69.1	66.2	75	2 1/4-16UN



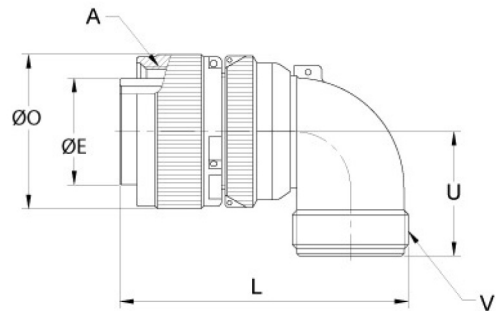
Plug Shell
插头外壳

TMS3106A



TMS3106A	A	L	ØO	ØE	V
14S	7/8-20UNEF	44	26.2	17.15	3/4-20UNEF
16S	1-20UNEF	44	29.6	20.45	7/8-20UNEF
16	1-20UNEF	48.5	29.6	20.45	7/8-20UNEF
18	1 1/8-18UNEF	67	33.4	23.62	1-20UNEF
20	1 1/4-18UNEF	69	36.6	26.67	1 3/16-18UNEF
22	1 3/8-18UNEF	72	39.2	29.85	1 3/16-18UNEF
24	1 1/2-18UNEF	72	43.2	33.02	1 7/16-18UNEF
28	1 3/4-18UNEF	72	49.6	38.61	1 7/16-18UNEF
32	2-18UNS	72	56	44.96	1 3/4-18UNS
36	2 1/4-16UN	75	63	50.29	2-18UNS
40	2 1/2-16UN	75	68.6	56.64	2 1/4-16UN

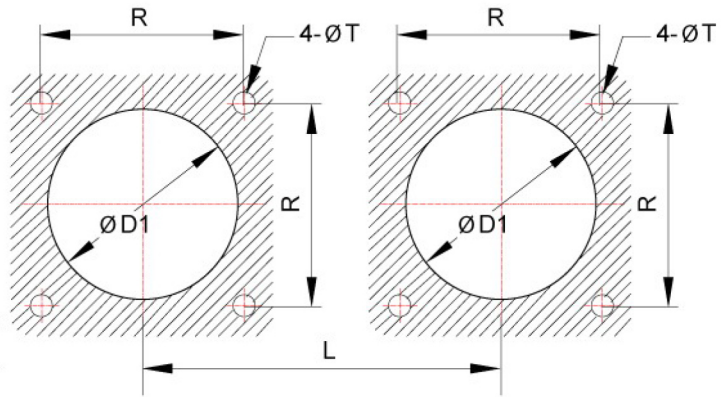
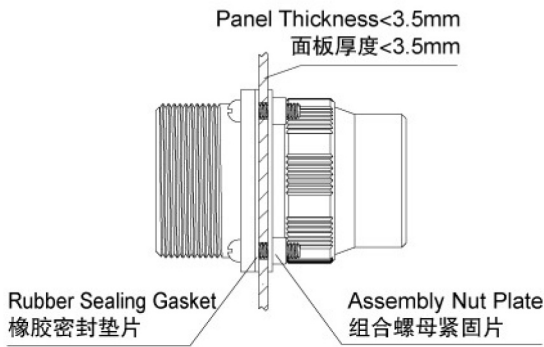
TMS3108A



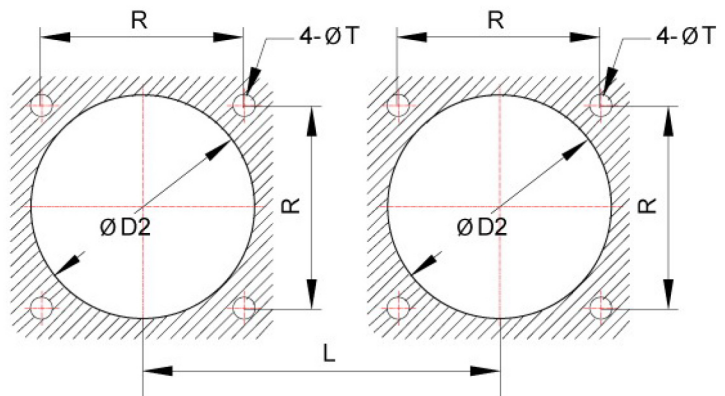
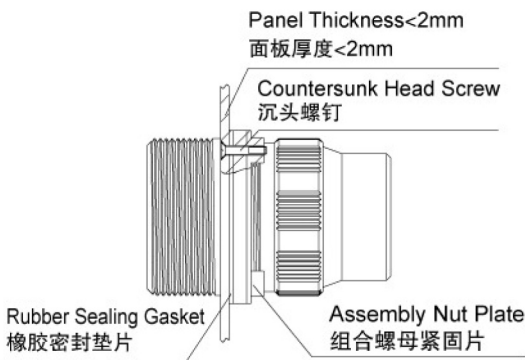
TMS3108A	A	L	U	ØO	ØE	V
-14S	7/8-20UNEF	50	23	26.2	17.15	3/4-20UNEF
-16S	1-20UNEF	55	27.8	29.6	20.45	7/8-20UNEF
-16	1-20UNEF	59.5	27.8	29.6	20.45	7/8-20UNEF
-18	1 1/8-18UNEF	72.3	26.5	33.4	23.62	1-20UNEF
-20	1 1/4-18UNEF	76	28	36.6	26.67	1 3/16-18UNEF
-22	1 3/8-18UNEF	76	29.5	39.2	29.85	1 3/16-18UNEF
-24	1 1/2-18UNEF	85.8	37	43.2	33.02	1 7/16-18UNEF
-28	1 3/4-18UNEF	85.8	37	49.6	38.61	1 7/16-18UNEF
-32	2-18UNS	94.2	41	56	44.96	1 3/4-18UNS
-36	2 1/4-16UN	98.4	44.5	63	50.29	2-18UNS
-40	2 1/2-16UN	104.5	48	68.6	56.64	2 1/4-16UN

Receptacle Mounting Methods 插座安装方式

Front Mounting 前装式



Rear Mounting 后装式

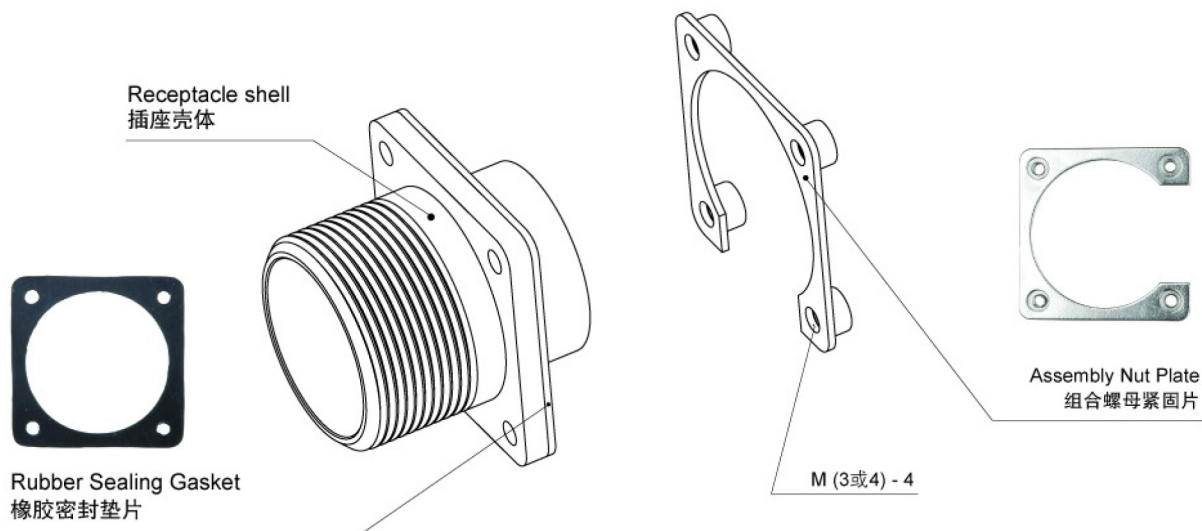


Panel Mounting Dimension (Unit: mm) 面板安装开孔尺寸(单位: mm)

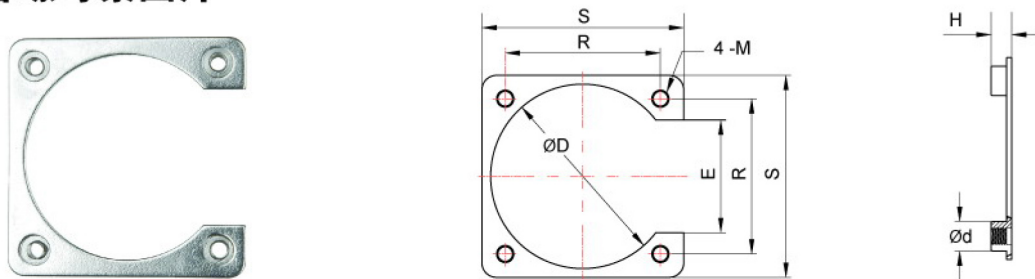
Size 规格	ϕT	$\phi D1$	$\phi D2$	R	L
14S	3.20	19.50	23.00	23.00	33.00
16S、16		23.00	26.00	24.60	34.40
18		26.00	31.20	27	38.30
20		30.00	34.60	29.40	41.70
22		33.00	37.80	31.80	45.20
24	3.70	36.00	41.30	34.90	48.70
28		42.00	47.10	39.70	55.50
32	4.30	48.50	53.80	44.50	62.40
36		55.00	60.00	49.20	69.00
40		59.10	65.40	55.50	75.00

**Recommend to Use Assembly Nut Plate-
Convenient, Steady, Secure**

建议采用组合螺母紧固片—便捷、牢固、安全



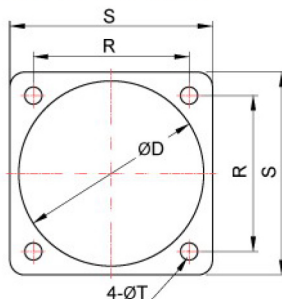
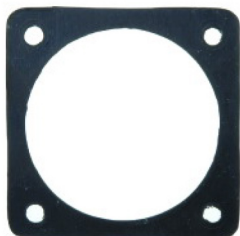
**Assembly Nut Plate
组合螺母紧固片**



Order No. 订货代码	Application 适用外壳规格	R	S	φ D	E	H	φ d	Thread M 螺纹M	Screw Spec 螺丝规格
SG14	14S	23.00	30.60	24.50	16.25	2.60	6.30	M3	M3 x 10
SG16	16S、16	24.60	32.30	28.20	17.90				
SG18	18	27	34.60	30.90	20.20				
SG20	20	29.40	38.5	34.30	22.50				
SG22	22	31.80	40.8	37.70	23.5				
SG24	24	34.90	44.8	41.20	25.9				
SG28	28	39.70	51.2	46.80	29.10	3.00	8.00	M4	M4 x 12
SG32	32	44.50	59.1	53.40	30.70				
SG36	36	49.20	63.9	59.60	35.50				
SG40	40	55.60	74.7	65.50	38.60				

Rubber Sealing Gasket 橡胶密封垫片

Attention: There are Non-Conductive type and Conductive type
注意：有非导电和导电两种



Order No. 订货代码	Application 适用外壳规格	R	S	φ D	φ d	T
RG14	14S	23.00	30.20	24.50	3.5	1
RG16	16S、16	24.60	32.50	27	3.5	
RG18	18	27	35	30.90	3.5	
RG20	20	29.40	38	34.30	3.5	
RG22	22	31.80	41.30	37.70	3.5	
RG24	24	34.90	44.50	41	3.7	
RG28	28	39.70	50.80	46.80	3.7	
RG32	32	44.50	57.20	53.40	4.5	
RG36	36	49.20	63.50	59.60	4.5	
RG40	40	55.50	69.90	65.50	5	

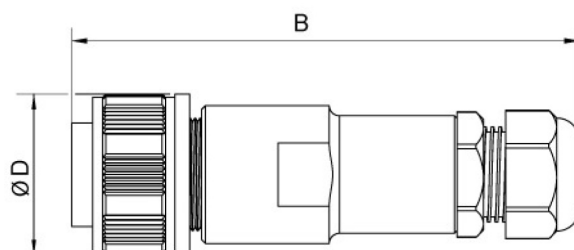
To order Conductive Rubber Sealing Gasket, please add "S" as a suffix to order Number.
订购导电橡胶密封垫片须在订货代码后加S”

Extension Products 延伸产品

TMS3126



出线接头另配 Please Order Separately



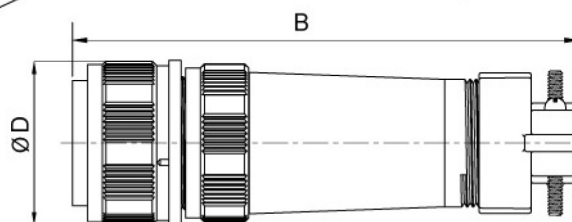
Shell Size 壳体规格	B		φ D
14S	AG7	90	26
16S、16	AG9	99.4	31.5
18	AG11	108.9	33.4
	AG13.5	109.9	
20		116.4	36.6
	AG16	121.4	
22		126.4	39.8
	AG21	129.4	
24	AG16	131.4	43.2
	AG21	134.4	

Shell Size 壳体规格	B		φ D
28	AG21	142.4	49.6
	AG29	145.4	
32	AG21	152.4	56
	AG29	155.4	
36		162.4	63
	AG36	167.4	
40	AG36	178.4	68.6

TMS3106-L



出线接头另配 Please Order Separately



Shell Size 壳体规格	B	φ D
14S	100	26
16S、16	105	31.5
18	110	33.4
20	117	36.6
22	124	39.8
24	126	43.2
28	135	49.6
32	135	56
36	137	63
40	151	68.6

Bayonet Lock Type

卡扣类型

BMS3102



BMS3100



BMS3101



BMS3106



BMS3108



Black Shell Type

黑色外壳

TMS3102-BK



TMS3100-BK



TMS3101-BK



TMS3106-BK



TMS3108-BK



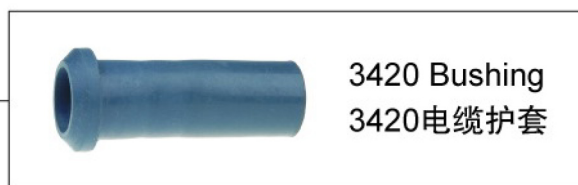
Suggestion: 建议: Please apply black shell solution when no screen request.
在使用时, 如果对连接器无屏蔽要求的, 可采用黑色电泳漆外壳。

Advantage: 优点: Salty spray proof ≥ 400 hours
耐盐雾腐蚀 ≥ 400 小时

Cable Clamp Part Number Explanation 订购电缆夹规格标示

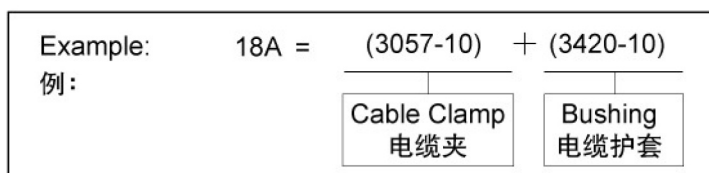
3057 Cable Clamp And 3420 Bushing

3057电缆夹与3420电缆护套

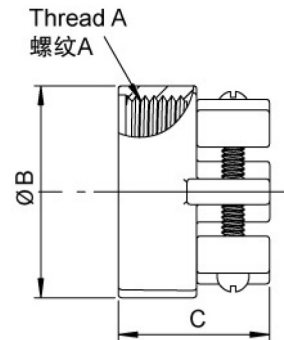
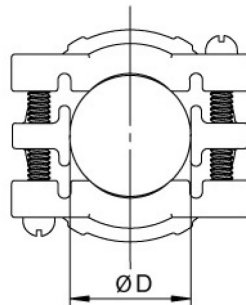


Note: The 3057 cable clamp is coupled with 3420 bushing, See the table for spec and order number

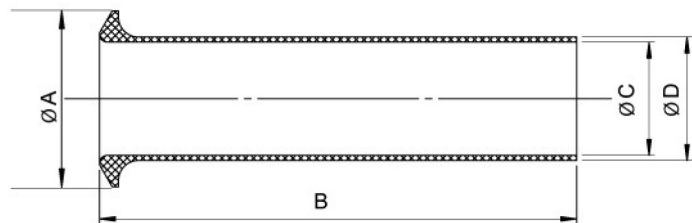
注：本公司TMS连接器锁配的电缆夹由3057电缆夹+3420电缆护套两个部件组成，其对应的规格及订货代码见下表。



Shell Size 外壳规格	Integral Order No. 整套订货代码	3057 Separately Order No. 单独订货3057代码	3420 Separately Order No. 单独订货3420代码
14S	14A	14-3057-6A	14-3420-6
16S、16	16A	16-3057-8	16-3420-8
18	18A	18-3057-10	18-3420-10
20	20A	20-3057-12	20-3420-12
22	22A	22-3057-12	22-3420-12
24	24A	24-3057-16	24-3420-16
28	28A	28-3057-16	28-3420-16
32	32A	32-3057-20	32-3420-20
36	36A	36-3057-24	36-3420-24
40	40A	40-3057-28	40-3420-28



Shell Size 壳体规格	Order No. 订货代码	Thread A 螺纹A	φ B Max	C	φ D Max
14S	3057-6A	3/4"-20UNEF	24.61	22.22	11.13
16S、16	3057-8A	7/8"-20UNEF	27.50	23.90	14.30
18	3057-10A	1"-20UNEF	30.20		15.90
20	3057-12A	1 3/16"-18UNEF	34.70		19
22	3057-12A				
24	3057-16A	1 7/16"-18UNEF	42.10	26.30	23.80
28	3057-16A				
32	3057-20A	1 3/4"-18UNEF	51.60	27.90	31.80
36	3057-24A	2"-18UNS	56.40	29.50	34.90
40	3057-28A	2 1/4"-16UN	63.50	43	41.30



Shell Size 壳体规格	Order No. 订货代码	φ A±0.18	B±0.18	φ C±0.18	φ D±0.18
14S	3420-6	15.72	66.68	7.92	10.80
16S、16	3420-8	19.05	63.50	11.10	14
18	3420-10	22.20	60.33	14.30	15.60
20	3420-12	28.60	57.20	15.90	18.80
22	3420-12				
24	3420-16	31.80	54	19.10	23.50
28	3420-16				
32	3420-20	44.40	50.80	23.80	31.50
36	3420-24	47.90	47.60	31.70	34.60
40	3420-28	52.90	44.40	34.90	41

Nylon Cable Gland 尼龙密封电缆接头 IP67



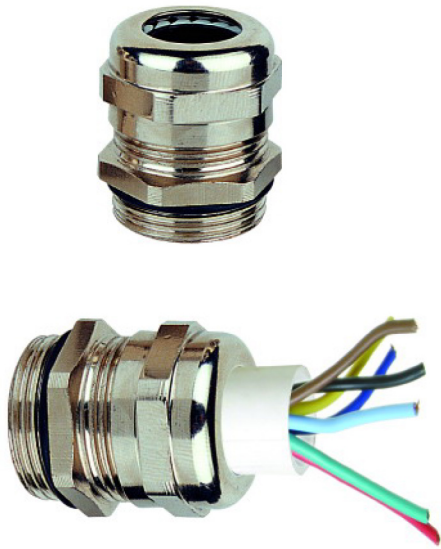
Shell Size 外壳规格	Order Number 订货代码	Cable O.D. 密封电缆外径范围mm
14S	VG7	φ 3~5.3
16S、16	VG9	φ 4.5~7.8
18	VG11	φ 6~10
	VG13.5	φ 7~12
20	VG13.5	φ 7~12
	VG16	φ 9~14
22	VG16	φ 9~14
	VG21	φ 14~18
24	VG16	φ 9~14
	VG21	φ 14~18
28	VG21	φ 14~18
	VG29	φ 18~25
32	VG21	φ 14~18
	VG29	φ 18~25
36	VG29	φ 18~25
	VG36	φ 24~30
40	VG36	φ 24~30

Nylon Hose Outlet 尼龙密封软管接头 IP67



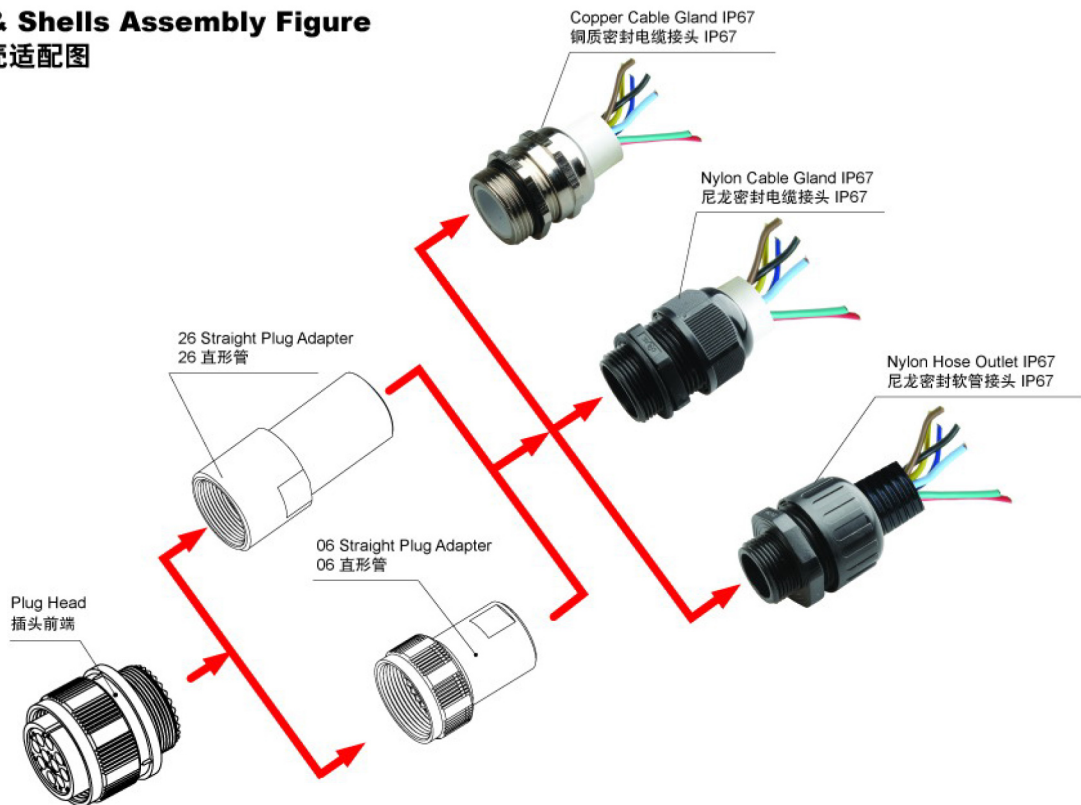
Shell Size 外壳规格	Order Number 订货代码	Hose I.D. 软管内径mm	Plastic Hose O.D. 塑料软管外径mm
14S	NG7	φ 6.6	φ 10
16S、16	NG9	φ 9.8	φ 13
18	NG11	φ 11.8	φ 15.8
	NG13.5	φ 13.8	φ 17.8
20	NG13.5	φ 13.8	φ 17.8
	NG16	φ 16.7	φ 21.2
22	NG16	φ 16.7	φ 21.2
	NG21	φ 21.7	φ 28.5
24	NG16	φ 16.7	φ 21.2
	NG21	φ 21.7	φ 28.5
28	NG21	φ 21.7	φ 28.5
	NG29	φ 28.2	φ 33.9
32	NG21	φ 21.7	φ 28.5
	NG29	φ 28.2	φ 33.9
36	NG29	φ 28.2	φ 33.9
	NG36	φ 36	φ 41.8
40	NG36	φ 36	φ 41.8

Copper Cable Gland
铜质密封电缆接头 IP67



Shell Size 外壳规格	Order Number 订货代码	Cable O.D. 密封电缆外径范围mm
14S	AG7	φ 3~6.5
16S、16	AG9	φ 4~8
18	AG11	φ 5~10
	AG13.5	φ 6~12
20	AG13.5	φ 6~12
	AG16	φ 10~14
22	AG16	φ 10~14
	AG21	φ 13~18
24	AG16	φ 10~14
	AG21	φ 13~18
28	AG21	φ 13~18
	AG29	φ 18~25
32	AG21	φ 13~18
	AG29	φ 18~25
36	AG29	φ 18~25
	AG36	φ 22~32
40	AG36	φ 22~32

Glands & Shells Assembly Figure
接头与外壳适配图



Protection Cap – Parts To Be Ordered Separately

防护盖 – 需另购附件

Receptacle Protection Cap

插座防护盖



Dust Cap Code 防尘盖规格	Application 适用
TMS25043-14	Shell Size 14S Receptacle 14S号壳体插座
TMS25043-16	Shell Size 16、16S Receptacle 16、16S号壳体插座
TMS25043-18	Shell Size 18 Receptacle 18号壳体插座
TMS25043-20	Shell Size 20 Receptacle 20号壳体插座
TMS25043-22	Shell Size 22 Receptacle 22号壳体插座
TMS25043-24	Shell Size 24 Receptacle 24号壳体插座
TMS25043-28	Shell Size 28 Receptacle 28号壳体插座
TMS25043-32	Shell Size 32 Receptacle 32号壳体插座
TMS25043-36	Shell Size 36 Receptacle 36号壳体插座
TMS25043-40	Shell Size 40 Receptacle 40号壳体插座

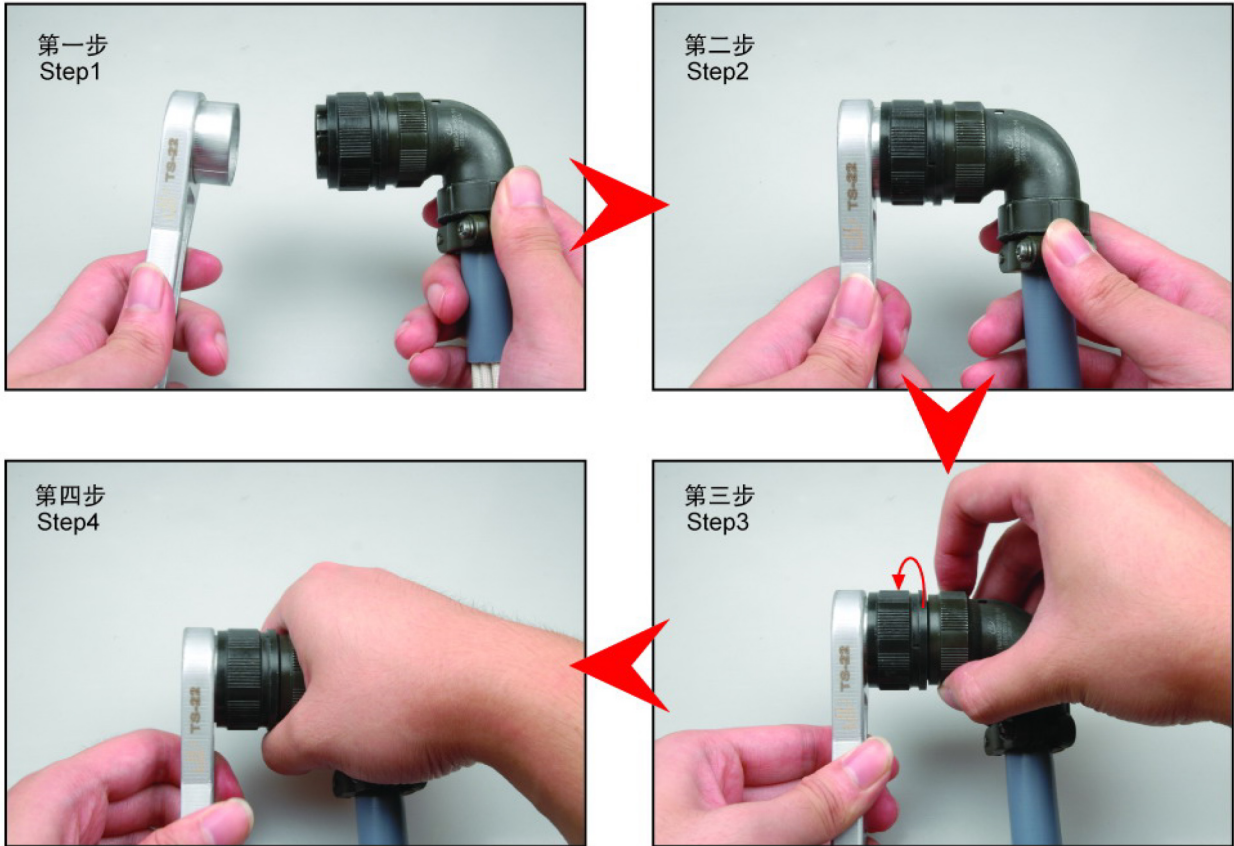
Plug Protection Cap

插头防护盖



Dust Cap Code 防尘盖规格	Application 适用
TMS25042-14	Shell Size 14S Plug 14S号壳体插头
TMS25042-16	Shell Size 16、16S Plug 16、16S号壳体插头
TMS25042-18	Shell Size 18 Plug 18号壳体插头
TMS25042-20	Shell Size 20 Plug 20号壳体插头
TMS25042-22	Shell Size 22 Plug 22号壳体插头
TMS25042-24	Shell Size 24 Plug 24号壳体插头
TMS25042-28	Shell Size 28 Plug 28号壳体插头
TMS25042-32	Shell Size 32 Plug 32号壳体插头
TMS25042-36	Shell Size 36 Plug 36号壳体插头
TMS25042-40	Shell Size 40 Plug 40号壳体插头

Assembly Instruction 组装步骤



Attention 注意:

After soldering wires with contacts of -06 or -08 plug, user must screw up the back nut. It is recommended to use Hualun tool (See chart below) and assemble in following diagrams above.

插头在焊接电线后组装-06或-08外壳时，必须把螺纹拧紧，推荐用华伦专用工具（见下表）按上列图示步骤组装。

Special Tool Spec & Order Number 专用工具规格及订货的代码



Shell Size 壳体号	14S	16S、16	18	20	22	24	28	32	36	40
Order No. 订货代码	TS14	TS16	TS18	TS20	TS22	TS24	TS28	TS32	TS36	TS40